

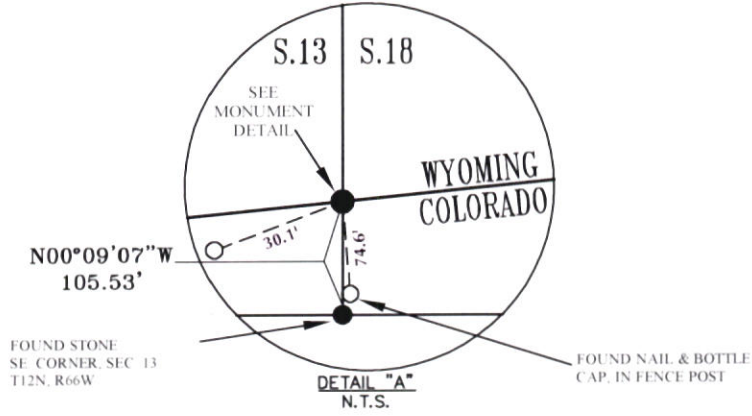
State of Wyoming Corner Record

(In compliance with the CORNER PERPETUATION AND FILING ACT, Wyoming Statutes, 2013 Section 33-29-901 through 33-29-910, and the Rules and Regulations of the Board of Professional Engineers and Professional Land Surveyors)

Reverse side of this form may be used if more space is needed.

Record of original survey and citation of source of historical information (if corner is lost or obliterated). Description of corner monumentation evidence found and/or monument and accessories established to perpetuate the location of this corner. Sketch of relative location of monument, accessories, and reference points with course and distance to adjacent corner(s) (if determined in this survey). Method and rationale for reestablishment of lost or obliterated corner.

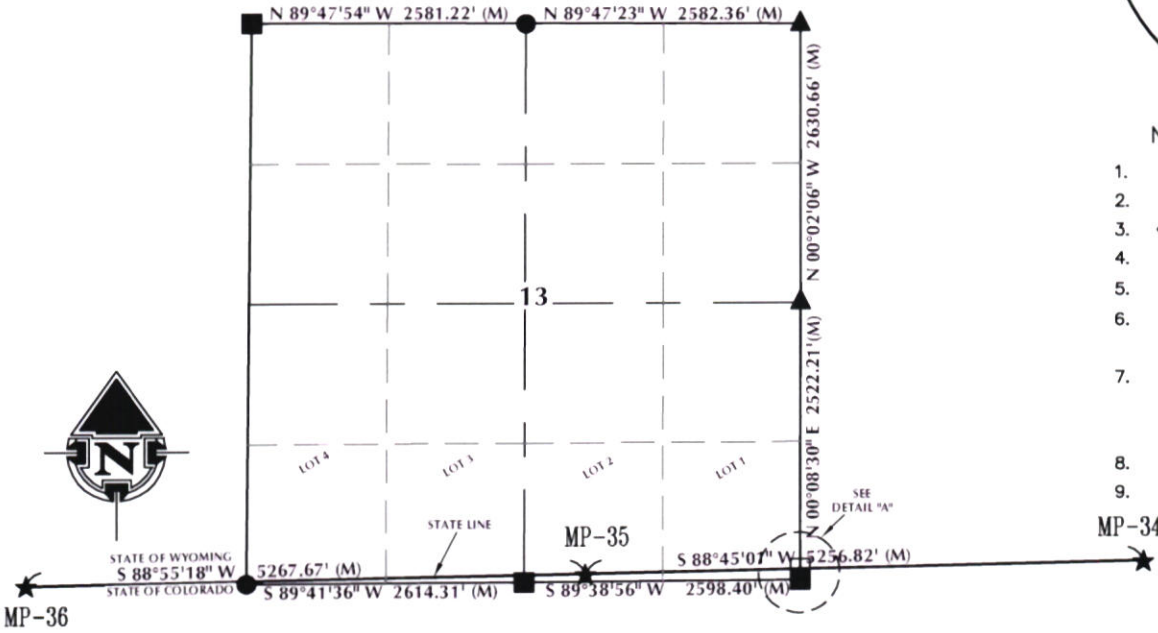
FOUND: Found 2" BRASS cap, stamped WYO LS 519, 3" above the surface of the ground, on 1.5" pipe;
found three mag nails with tags, stamped CO PLS 38512, in fence posts.
SET: Nothing.



Monument Inscription



Monument Location



NOTES:

1. ▲ INDICATES FOUND BRASS CAP
2. ● INDICATES FOUND ALUMINUM CAP
3. ◆ INDICATES SET ALUMINUM CAP
4. ■ INDICATES FOUND STONE
5. ★ INDICATES FOUND 3' STEEL BLADE
6. □ INDICATES SECTION CORNER PER CORNER RECORD
7. BASIS OF BEARING DERIVED FROM WYOMING COORDINATE SYSTEM NAD83 EAST ZONE
8. ALL MEASURED DISTANCES ARE GRID
9. DRAWING NOT TO SCALE

Date of Field Work: 9/13/23

Office Reference: 23-120

K:\ANADARKO\SURVEY BASE MAP\WY83-ELCORNER RECORDS\T12N_R66W\DRAWN CORNERS\Ncc-25_12N66W.dwg, 10/30/2023 11:40:00 AM, Randy French

Cross Index Plat

	1	2	3	4	5	6	7	8	9	10	11	12	13	14	15	16	17	18	19	20	21	22	23	24	25
A																									
B																									
C		6	5	4	3	2	1																		
D																									
E																									
F																									
G		7	8	9	10	11	12																		
H																									
J																									
K																									
L		18	17	16	15	14	13																		
M																									
N																									
O																									
P		19	20	21	22	23	24																		
Q																									
R																									
S																									
T		30	29	28	27	26	25																		
U																									
V																									
W																									
X		31	32	33	34	35	36																		
Y																									
Z																									

Firm/Agency, Address

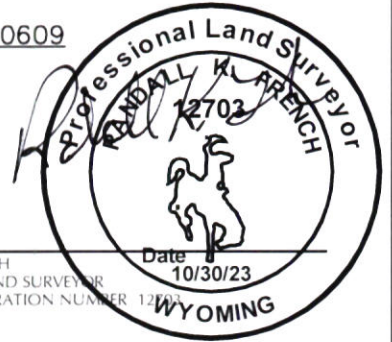
609 Consulting, LLC

1095 Saberton Avenue

Sheridan, WY 82801

Telephone Number: 307-674-0609

This corner record was prepared by me or under my direction and supervision.



RANDALL K. FRENCH
PROFESSIONAL LAND SURVEYOR
WYOMING REGISTRATION NUMBER 12703
Date 10/30/23



RECP #: 865493
RECORDED 11/13/2023 AT 2:47 PM BK# 2857 PG# 285
Debra K. Lee, CLERK OF LARAMIE COUNTY, WY PAGE 1 OF 1

Corner Name Southeast Closing Corner Section 13, T 12 N, R 66 W, 6TH P.M Cross-Index No.: M-N/25.

County: LARAMIE